



EARTH

Sole Agent

NVOGA
MARBELLA REALTY

Developer

ABU



EXCEPTIONAL QUALITY

in a Prime Location

An aerial photograph of a beach and ocean. The left side shows golden sand with some footprints, leading to white foam from waves washing onto the shore. The right side shows deep turquoise water with white foam from waves breaking. The image is split vertically down the middle.

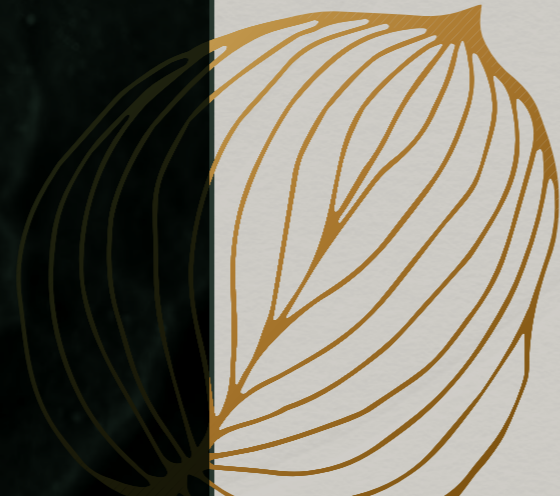
MARBELLA'S GOLDEN MILE

Illustrious Surroundings, without Compromise

ECO-LUXE ON MARBELLA'S

Golden Mile

EARTH ushers in a new dawn of sustainable sophistication, and in doing so, creates Marbella's most desired new address. An unparalleled luxury complex of just 28 unique apartments and duplex penthouses worthy of its iconic location, EARTH promises elegance married to impeccable green credentials.

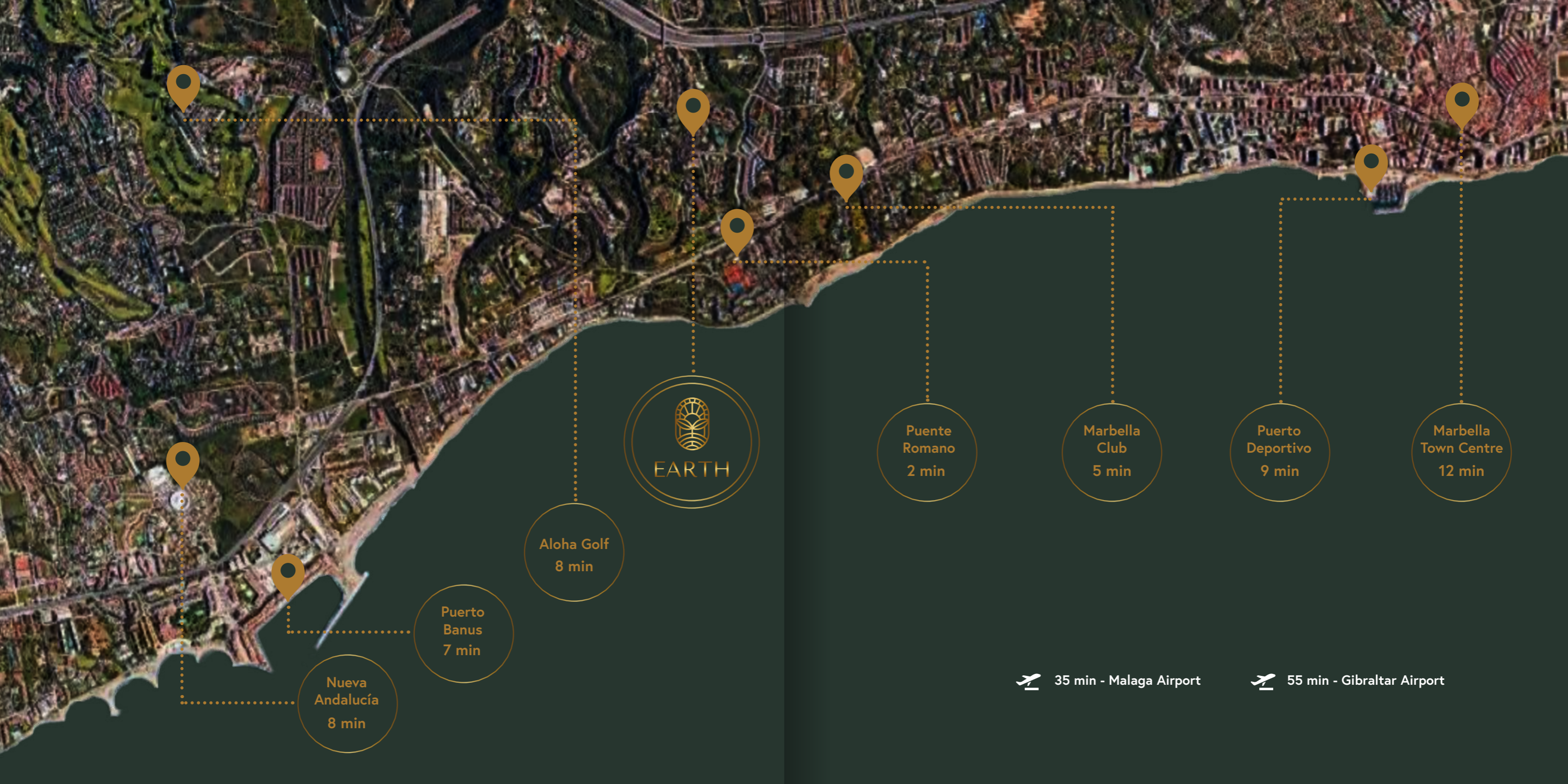




WHERE MARBELLA'S GOLDEN MILE

Meets sustainable luxury

Moments from the gastronomic and entertainment focal points of the Marbella Club and Puente Romano 5* hotels, EARTH puts you right in the heart of the luxurious lifestyle for which the area is globally renowned. Experience unparalleled luxury without concessions: you can have it all at Marbella's most sought-after new address.



Aloha Golf
8 min

Puerto Banus
7 min


Nueva Andalucía
8 min

Puente Romano
2 min

Marbella Club
5 min

Puerto Deportivo
9 min

Marbella Town Centre
12 min

 35 min - Malaga Airport

 55 min - Gibraltar Airport

LOCATION

EARTH offers the lifestyle you've always dreamt of. Secure within this exclusive gated community, you're just a leisurely walk away from the tranquil shores of the Mediterranean Sea. Beyond the peace of your immediate surroundings, vibrant beach clubs await your discovery. Relish a diverse array of refined dining experiences or take a moonlit stroll along the famed Paseo Marítimo, the iconic seafront promenade. At EARTH, every moment is an invitation to embrace the best of coastal living.

Experience the best the region has to offer:

- *World-class golf courses on your doorstep*
- *A brief escape to Puerto Banús, where the elite dock in style*
- *Explore the rich history and culture of this storied region*
- *Pristine sands, happening beach clubs or scenic dunes, enjoy the beach on your own terms*





SUSTAINABLE ELEGANCE ON
Marbella's Golden Mile



FUNCTION

Meets Style

Conceived by the prestigious architect studio T10, this boutique development is designed as a contemporary, sophisticated haven for discerning residents. Each elegant apartment and duplex penthouse boasts private pools, expansive terraces, and secluded gardens.

Crafted with meticulous attention to detail, our residences blend architectural finesse with practical design. Natural light graces the interiors, while expansive terraces offer breathtaking unobstructed views of the mountains and sea.

DISTINCTIVE

Garden Apartments

Showcasing 3–4-bedroom garden apartments, EARTH presents residences that are the epitome of refined living, harmoniously intertwined with the beauty of nature within an elite gated enclave. The heart of these homes lies in their expansive open plan living and dining spaces.

Step into your private garden and enjoy the shady terraces that are your personal haven, perfect for relaxation while soaking in the mesmerising vistas. Bathed in abundant natural light, these apartments promise verdant private sanctuaries.

Radiating warmth and sophistication, each bedroom is complete with en-suite facilities and promises tranquillity and privacy for family members and guests. The master suite, opening directly onto the beautifully landscaped garden, redefines the essence of indoor-outdoor living. Relish the ease of direct access to EARTH's communal spaces, where premium amenities await your indulgence.





SUBLIME

Duplex Penthouses

Make no compromises with these magnificent duplex penthouses. Situated in this exclusive gated community just moments from the lavish atmosphere of Marbella's Golden Mile, these penthouses represent the pinnacle of luxury living.

The three and four-bedroom configurations of these grand properties ensure ample space for family and friends, each bedroom being ensuite for privacy. The master suite is a marvel of design, with unparalleled space and natural light, making it a sophisticated private sanctuary.

Ascending to the roof terrace, you are greeted with abundant space for entertaining and making unforgettable memories. Here, the rooftop swimming pool is an emblem of luxury. Perched above the Golden Mile, it offers a serene escape with panoramic views. This private pool serves as a tranquil haven for both invigorating swims under the morning sky and peaceful evening soaks under the stars, blending the comforts of home with the indulgence of a high-end resort.



COMMUNAL AREAS

Earth: A Resort-Like Ambience

Residents at EARTH belong to a community of discerning individuals. We have created this exclusive apartment complex founded on the concept of connection, both with nature and each other. EARTH offers a resort-like ambience, where homeowners can socialise, or spend time in quiet contemplation.

Featuring a spa, a cutting-edge gym, a serene yoga retreat, an indoor heated pool and a salt-water outdoor pool nestled within impeccably landscaped communal gardens, this exquisite setting has been thoughtfully designed to enhance and elevate the well-being experiences of its residents.

OPULENT APARTMENTS
with Breathtaking Views





GARDENS

to Soothe the Spirit

Tucked just a stone's throw from Marbella's vibrant centre, our manicured gardens stand as a testament to both beauty and sustainability. With a focus on indigenous planting, we've ensured that flora thrives in its natural habitat, reducing the need for excessive maintenance and water consumption. Furthermore, our innovative rainwater collection system provides eco-friendly irrigation, underlining our commitment to environmental stewardship.

But beyond these sustainable practices, these gardens serve a deeper purpose. They offer a tranquil sanctuary, a place where the spirit finds solace and the mind is rejuvenated, allowing residents to momentarily step away from the urban rush and immerse themselves in nature's uplifting embrace.

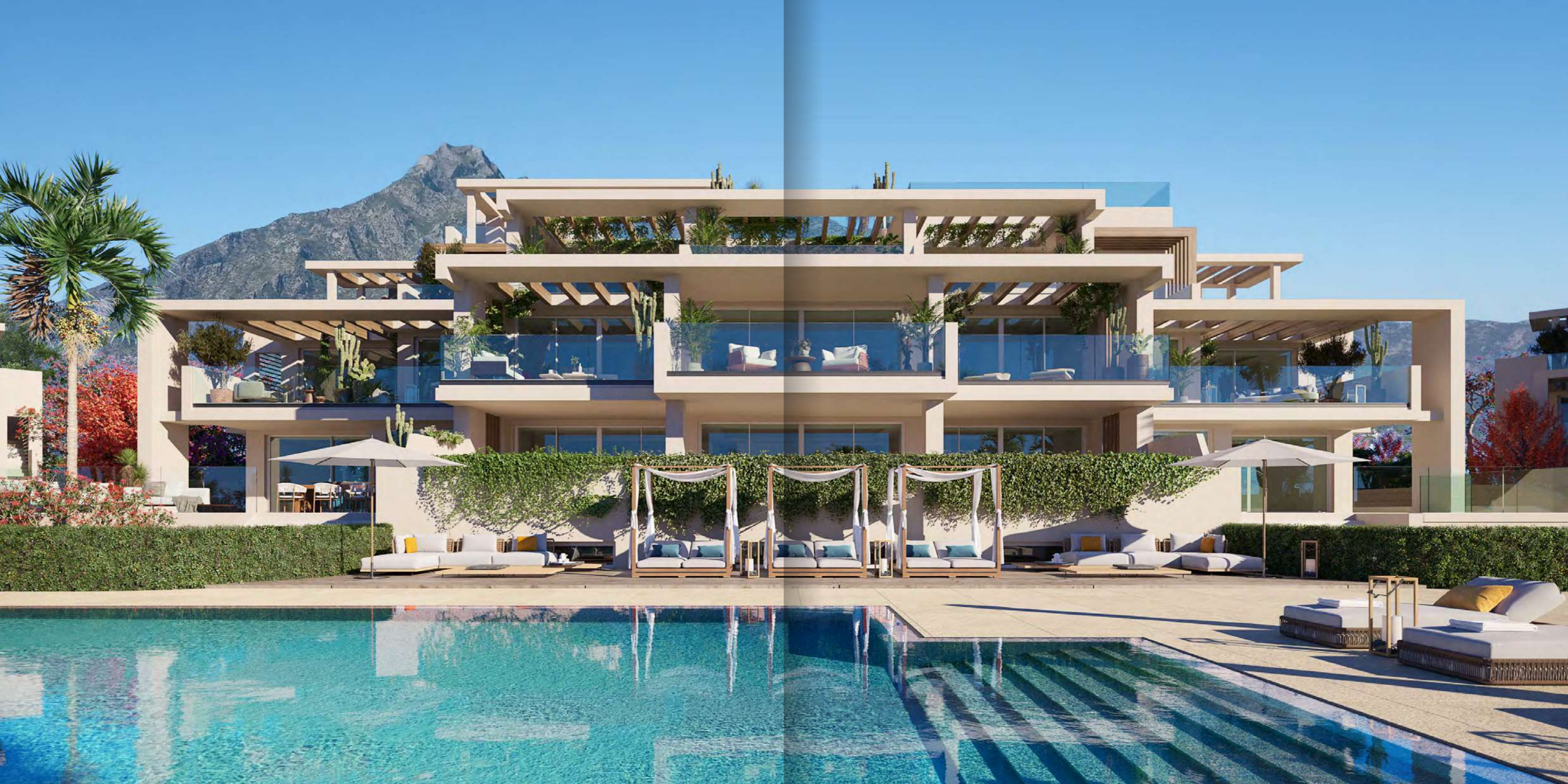
REFRESH

Your Body and Senses

In the heat of the balmy Mediterranean summers, our expansive swimming pool emerges as a refreshing haven. Designed for both leisurely dips and invigorating swims, it provides the perfect respite from the sun's heat. As you lounge by the poolside, let the gentle ripples and the shimmering waters transport you to a state of relaxation and tranquillity.

Beyond their aesthetic allure, these pools are a nod to our commitment to sustainability. Filled with salt water, they not only offer a more natural and gentle bathing experience but also reduce environmental impact, aligning with our ethos of harmonious living with nature. Dive in, cool off, and let the sustainable waters rejuvenate your spirit.





















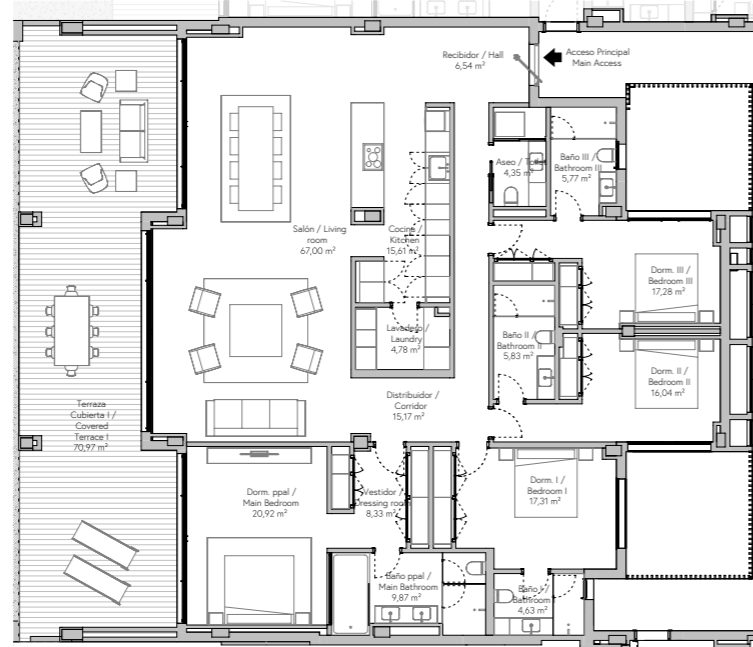


EARTH

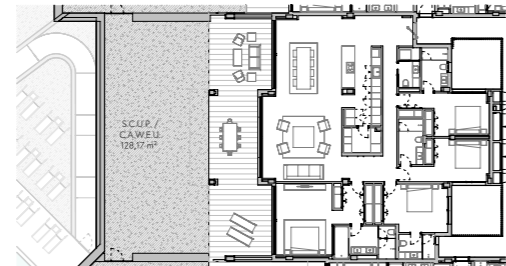
EDIFICIO 01
Apartamento 02

CUADRO DE SUPERFICIES / AREAS

	SUP. ÚTIL USABLE AREAS	SUP. CONSTRUIDA BUILT AREA
Vivienda / Apartment	219,41 m ²	251,76 m ²
Terraza cubierta / Covered terrace	70,97 m ²	74,90 m ²
Terraza descubierta / Terrace uncovered	0,00 m ²	0,00 m ²
S.C.U.P. / C.A.W.E.U.	128,17 m ²	145,96 m ²
Total	418,55 m ²	472,62 m ²
Sup. construida (Incl. p/p Z.Z.C.C. + Amenities)		419,05 m ²
Sup. útil según DECRETO 218/2005 / DECREE 218/2005		241,35 m ²



PLANTA VIVIENDA

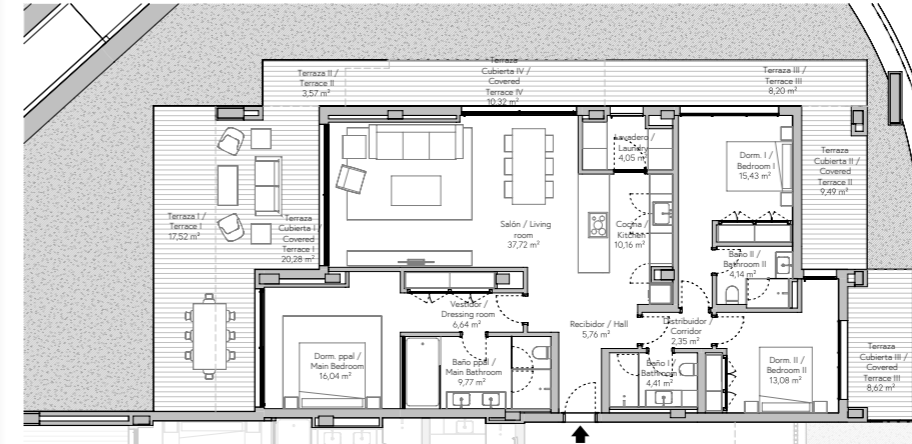


EARTH

EDIFICIO 03
Apartamento 17

CUADRO DE SUPERFICIES / AREAS

	SUP. ÚTIL USABLE AREAS	SUP. CONSTRUIDA BUILT AREA
Vivienda / Apartment	129,56 m ²	154,41 m ²
Terraza cubierta / Covered terrace	48,72 m ²	50,93 m ²
Terraza descubierta / Terrace uncovered	29,29 m ²	32,59 m ²
S.C.U.P. / C.A.W.E.U.	235,12 m ²	265,99 m ²
Total	442,70 m ²	503,93 m ²
Sup. construida (Incl. p/p Z.Z.C.C. + Amenities)		302,11 m ²
Sup. útil según DECRETO 218/2005 / DECREE 218/2005		142,52 m ²



PLANTA VIVIENDA





EARTH

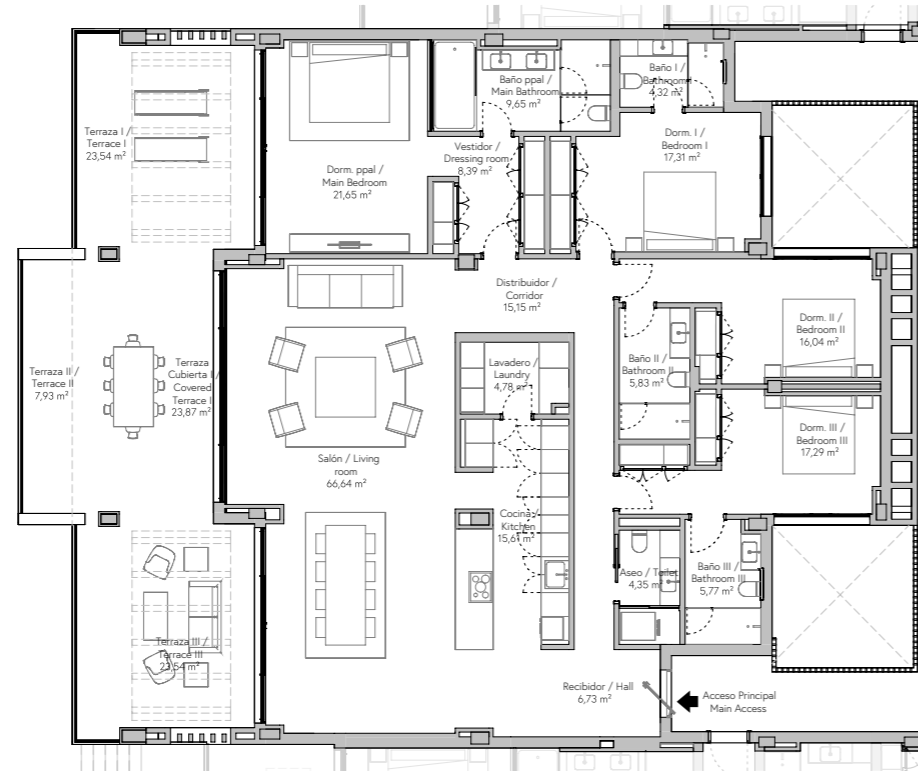
EDIFICIO 03
Apartamento 19

CUADRO DE SUPERFICIES / AREAS

	SUP. ÚTIL USABLE AREAS	SUP. CONSTRUIDA BUILT AREA
Vivienda / Apartment	219,52 m ²	251,01 m ²
Terraza cubierta / Covered terrace	23,87 m ²	24,50 m ²
Terraza descubierta / Terrace uncovered	55,01 m ²	59,74 m ²
S.C.U.P. / C.A.W.E.U.	0,00 m ²	0,00 m ²
Total	298,40 m ²	335,25 m ²

Sup. construida (Incl. p/p Z.Z.C.C. + Amenities) 427,29 m²

Sup. útil según DECRETO 218/2005
/ DECREE 218/2005 241,47 m²



EARTH

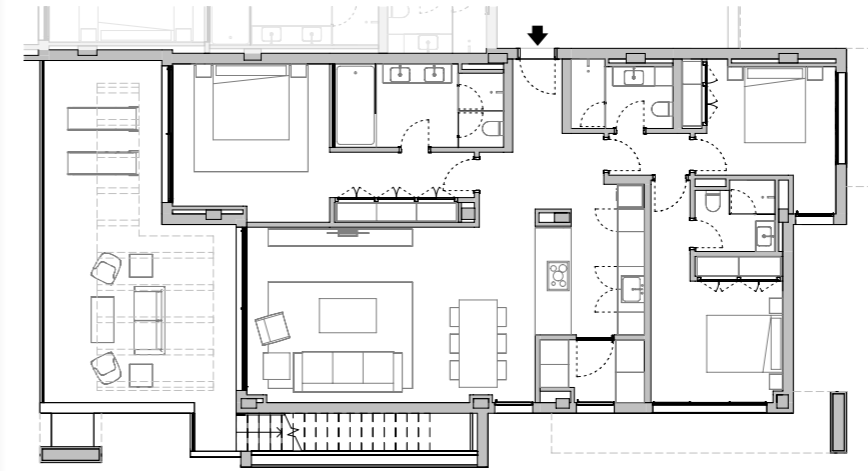
EDIFICIO 02
Apartamento 11

CUADRO DE SUPERFICIES / AREAS

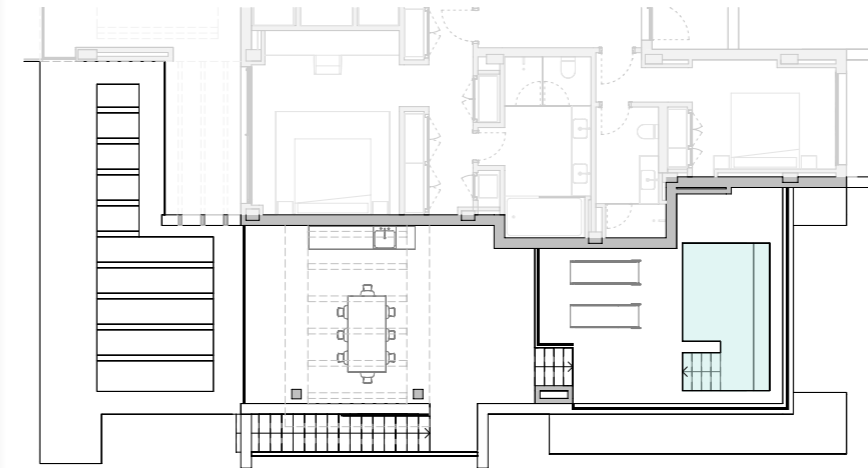
	SUP. ÚTIL USABLE AREAS	SUP. CONSTRUIDA BUILT AREA
Vivienda / Apartment	129,31 m ²	154,24 m ²
Terraza cubierta / Covered terrace	0,00 m ²	0,00 m ²
Terraza descubierta / Terrace uncovered	106,12 m ²	123,16 m ²
S.C.U.P. / C.A.W.E.U.	0,00 m ²	0,00 m ²
Total	235,43 m ²	277,40 m ²

Sup. construida (Incl. p/p Z.Z.C.C. + Amenities) 341,15 m²

Sup. útil según DECRETO 218/2005
/ DECREE 218/2005 142,24 m²



PLANTA VIVIENDA



PLANTA SOLARIUM

Sole Agent Developer

NVOGA ABU

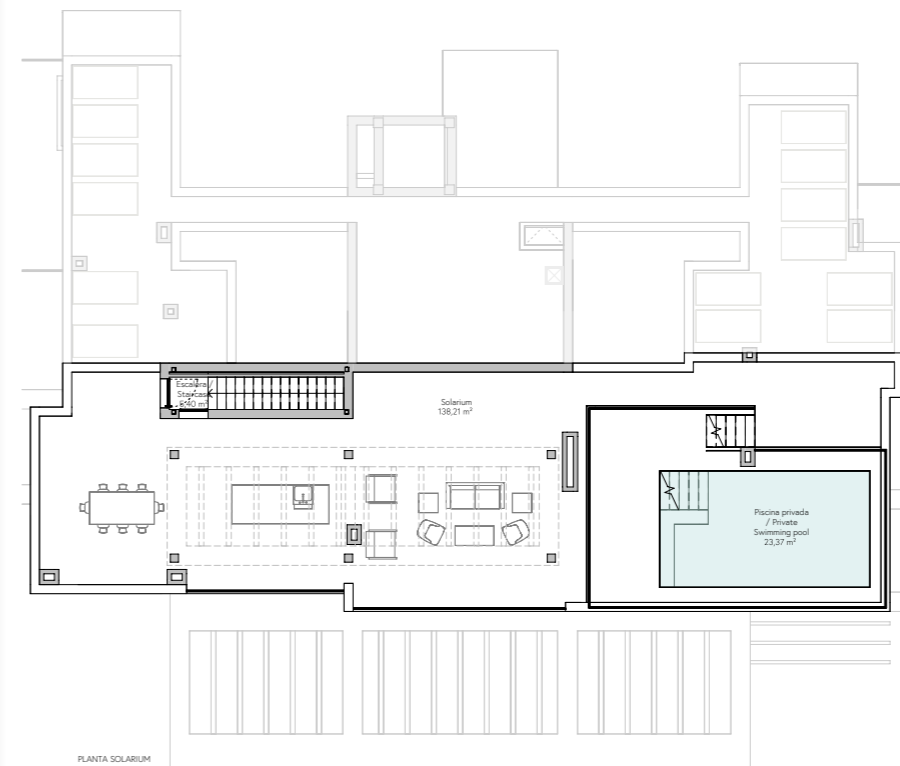
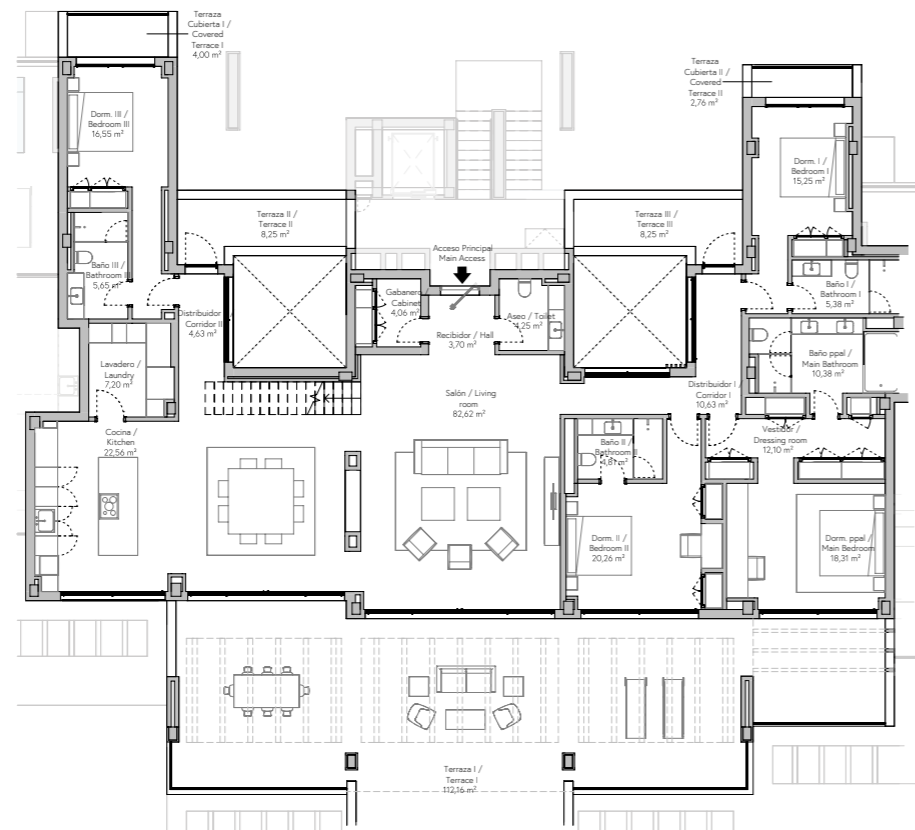
Sole Agent Developer

NVOGA ABU

EDIFICIO 03
Apartamento 21 P0

CUADRO DE SUPERFICIES / AREAS

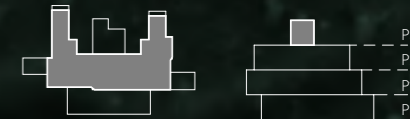
	SUP. ÚTIL USABLE AREAS	SUP. CONSTRUIDA BUILT AREA
Vivienda / Apartment	253,74 m ²	307,23 m ²
Terraza cubierta / Covered terrace	6,76 m ²	8,45 m ²
Terraza descubierta / Terrace uncovered	290,25 m ²	331,51 m ²
S.C.U.P. / C.A.W.E.U.	0,00 m ²	0,00 m ²
	550,75 m ²	647,19 m ²
Sup. construida (Incl. p/p Z.Z.C.C. + Amenities)		749,82 m ²
Sup. útil según DECRETO 218/2005 / DECREE 218/2005		279,11 m ²



EDIFICIO 03
Apartamento 21 P1

CUADRO DE SUPERFICIES / AREAS

	SUP. ÚTIL USABLE AREAS	SUP. CONSTRUIDA BUILT AREA
Vivienda / Apartment	253,74 m ²	307,23 m ²
Terraza cubierta / Covered terrace	6,76 m ²	8,45 m ²
Terraza descubierta / Terrace uncovered	290,25 m ²	331,51 m ²
S.C.U.P. / C.A.W.E.U.	0,00 m ²	0,00 m ²
Total	550,75 m ²	647,19 m ²
Sup. construida (Incl. p/p Z.Z.C.C. + Amenities)		749,82 m ²
Sup. útil según DECRETO 218/2005 / DECREE 218/2005		279,11 m ²



Sole Agent

Developer

NVOGA
MARBELLA REALTY

ABU



EARTH



+34 952 813 333
info@nvoga.com